

Riverwalk Quilters Guild

Volume 25 Issue 6

DECEMBER 2018

President's Message

Members:

As Christmas fast approaches when our lives become busier think of how much a quilted item from you would bring joy to someone who needs cheering up by your beautiful creations.

I'm still learning this President job tripping over both of my feet but still getting up and moving forward and thanking God that I keep waking up on the green or now the white side of the grass so I'm doing good.

Please bear with me again during this transition and many thanks to all of you who have commented to me that so far I'm doing a good job.

And now I have some good news for you. Our guild member Margaret Zitt has graciously offered to fill the position of Vice President. So please wish her well and offer her any help that you can filling this position. Many thanks Margaret.

I wish all of you a very Merry Christmas, a Happy Holiday season and a Happy New Year with many quilts in 2019.

Mary Cieslak
President - RQG

Opportunity Quilt Tickets

Hi everyone,

I have a batch of tickets for you to sell. They are \$1 ea. or 6 tickets for \$5. I will be at the guild meetings to distribute yours if you have not gotten them yet and also to collect stubs and money as sales are made. Below is a picture of the quilt. Remember to make a list for yourself of various friends, family and/or groups you know who would be interested. I have extra tickets available as well. Happy selling!

Kathleen Herbach
Phone: 630-668-5451



RQG Membership Report

Riverwalk currently has 90 members. Our two newest members are Nanette Farina and Cynthia O'Deay. Please make a point to introduce yourself as they become part of our group. Welcome to both!

If you haven't had your picture taken for the directory (or want to update it), be sure to see Nancy Sturgeon who will be glad to help.

Bev Parker and Carol Rubeck

Riverwalk Upcoming Programs/ Workshops

December 11: Cheryl Sleboda Guild Topic: "Not Your Grandmother's Quilt".

January 8: Holiday Party

February 12: Our own Catherine Redford will share her lecture "Trip Around The World with Folk Stitches".

March 12: Christa will share her lecture, "How do I Quilt It?" Her passion is helping others discover the joy that comes from quilting.

April 9: [Philanthropy Sew-In](#)
<http://www.riverwalkquilters.com/sew-in.html>

May 14: Kris Vierra- Guild Topic: Evolution of an Accidental Quilter, and workshop: "So I Have the Quilt Pieced, Now What?" www.quilterontherun.com/

June 11: 25th year Anniversary/ RQG Birthday Bash! Hooray!!

August 13: Rebecca Bryan of Bryan House Quilts! She is a modern quilter known for color manipulation! <http://bryanhousequilts.com>

Checkout the website, Facebook and Instagram accounts for more information

Other Quilt Guild's Upcoming Programs and Events

Heart Songs Quilt Show

March 29 – 30, 2019 (9-4)

Channahon United Methodist Church

24751 W Eames St (Rt. 6), Channahon

Hosted by Pieces from the Heart Quilt Guild

*** If you are aware of other upcoming quilt events you think our members might be interested in attending please send me details @ RiverwalkQG.newsletter@gmail.com and I will add to this section of the newsletter.

Carol Matlak

QUILTS WANTED!

Our quilt show is coming. This cold weather and snow make May feel so far away. Which is why we want to remind you to start work for your entries to the quilt show. Please remember to consider the quilts you've made in the last 3 years!

Below is the quilt show registration form. We would encourage you to make copies of your registration forms prior to turning the forms in.

Please print your forms and drop them off with us at our next guild meeting. We've also attached "How to make a quilt sleeve" by Susan Brubaker Knapp. You can also find the link on our website. Note: There's a sleeve requirement for anything over 36".

We look forward to seeing all the beautiful quilts at the quilt show!



Application Form



Making a Sleeve

Tracy Husch-Lissak

Quilt Show Raffle Baskets

Donation Requests

1) SELVAGES- Please consider donating your selvages. We would be most appreciative if the donation was a minimum of 3/4 to 1 inch of material beyond the actual selvaige. Please bring your selvages to the next guild meeting.

2) SERVICES OF A LONG ARM QUILTER- We would like to partner with a long arm quilter willing to donate their time to finish one quilt. We would be respectful of and disclose the restrictions (e.g. no customization, etc.). This could be a good opportunity for a long arm quilter looking to procure new business opportunities.

Questions? Please contact Karen Jacobsen at kjacobfmc@aol.com or Amy Shuter at pianoman810@yahoo.com

Philanthropy

Special thanks to the quilters who turned in projects at the November meeting.

- ◇ Lenore Herejsa—1 quilt top
- ◇ Kathleen Curtis—9 pillowcases
- ◇ Judy Long—2 finished quilts
- ◇ Anonymous—2 pillowcases
- ◇ Camille Padilla —2 quilts
- ◇ Linda Yokelson—2 quilts
- ◇ Jill Bryon— 2 pieced quilts
- ◇ Lynn Kmieck—binding
- ◇ Sandy Doubek—pieced and quilted

Keep up the good work and be sure to stop by our table and pick up some more projects to finish. As we head into the holiday season, know that your work is loved by many people and the giving back makes everything worthwhile. Happy Holidays.

Sandy Doubek and Deb Obriecht

Special Events

The 2018-19 RQG Challenge will be open to members at the December meeting. Please consider signing up for this year's challenge whose theme focus is on the guild's 25th anniversary. Look for Sue Damitz or me to sign up.

General information and rules follow:

2018 - 2019 Riverwalk Quilt Guild Challenge
Theme: Silver Anniversary - Celebrating 25 years

General Information:

1. You must be a member of RQG to participate
2. \$5 entry fee refundable if challenge is completed
3. Only one entry per person
4. First available entry date is November 13, 2018
5. Finished projects due on April 9, 2019
6. Voting for 1st, 2nd, and 3rd prize will take place at March Guild meeting by those in attendance. One vote per entry, please
7. Cash prizes will be awarded
8. We encourage all entries to be exhibited at our RQG quilt show in May 2019.

Rules:

1. Make a quilt/wall hanging using the Silver Anniversary - Celebrating 25 years theme.
2. Any style may be used: traditional, modern, contemporary, art
3. Finished size needs to be 25" X 25"
4. The quilt must be completely finished (quilt must have two layers of cloth filled with batting and be quilted or tied)
5. Attached a sleeve on the back is required for quilt show
6. Include a label on the back of your project containing your name and phone number
7. You may add any embellishments
8. Attach the entry form

Darlene Ebel and Sue Damitz

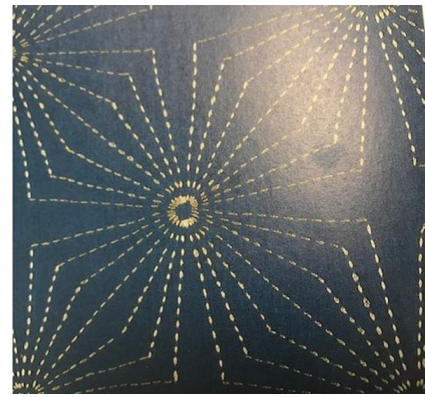
From the Library:

Karen Kay Buckley, in her lecture at our last meeting, mentioned how she quilts in sections with a method similar to Debra Wagner's hand method, only by domestic machine. Riverwalk library has Marti Michel's DVD with directions on several ways to do this. It's so much quicker and easier to quilt smaller quilts. This is the way to do all those large tops you have, even if they are already pieced together as a large quilt.

Edyta Sitar's 2017 book, Patches of Blue, has her usual beautiful, imaginative new designs with traditional piecing. Her use of color and inspired combinations are magical:



Sensational Sashiko will help you make a pretty quilt from those Japanese fabrics you don't know what to do with! And Sashiko and Beyond shows many unique ways to quilt it.



Any Body Can Learn to Quilt (that's the name of the book!) with a good beginner's book. The articles and the Quilter's Calculator Charts are helpful and the author includes directions for a beginner's lone star.



Snowflake Follies, Quilts to Make in a Winter Weekend, has a redwork snowflake design, template drawings for snowflakes, and some designs using snowflake fabric. It's winter, right?



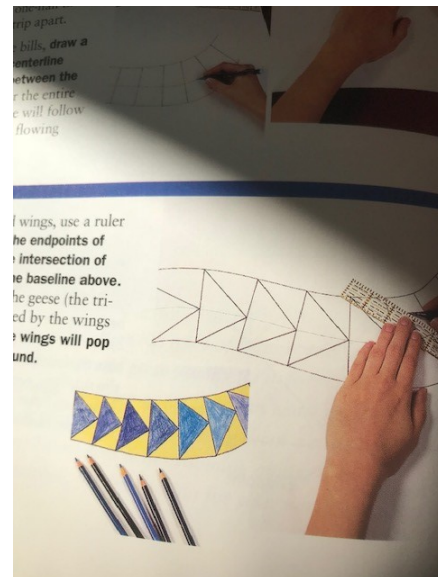
Dream Landscapes is a “fast-piece applique” which is used to join curves, circles, and irregular shapes using freezer paper for placement. It’s raw-edge applique and the edges are covered with stitches, beads, couching, etc. It’s a good technique for art quilts.



Fabulous T-Shirt Quilts has information on stabilizers, battings, sashing, framing, etc. There are a lot of examples of multi-sized and multi-shaped motifs.



And want to make curved flying geese? Learn Pineapple block design from Dixie Haywood? Make a LeMoyne Star in the size you need? Drafting & Design Simplified is full of techniques for designing and resizing blocks, plus tips and answers to common problems. It’s an old book with methods by Karen Kay Buckley, Gloria Hansen, Joen Wolfrom and others. Drafting is still drafting!



Come visit the library and pick out something to keep you busy during the coming (or already here) winter.

Rita Farrell and Lynn Slaughter

Holiday Party Time

It is party time for our Guild!!! We will share dinner, friendship and fun on January 8, 2019 beginning at 6:30 pm. The Guild will supply the fried chicken. Each of you will be asked to share a dish.

We will again assign appetizers to the first of the membership list, vegetables or casserole to middle of the list and desserts to the end.

Plan on sharing the holiday with a "white elephant gift" exchange.

More information will follow in the January newsletter. Enjoy this special time of the year.

Dee McHale

January GUILD RUMMAGE SALE

1. **Quilting and sewing *magazines***, but **no patterns or books**. Save those for May quilt show store.
2. **Non-quilting fabric, notions, unfinished projects, yarn, other craft supplies, etc.** Rummage sale profit goes into the Guild's coffers. Items not sold at the Rummage Sale will be donated to local charities.

Nancy Sturgeon

Hospitality

Please think about bringing a treat to our December meeting. Thank you for all the wonderful goodies that you have been contributing. It's always nice to have a bite to eat during our breaks.

Thanks,

Leesa Jump and Dee McHale

MEMBER DONATIONS:

1. **Quilting books** (fiction and non-fiction)
2. **Up-to-date quilt patterns** (If the price tag says "Stitches & Stuffing", it's probably out of date.)
3. **Quilting fabric** for our shop at the Guild Show in May. If your fabric pieces are large, please measure and mark them with a piece of painter's tape or staple a paper with the dimensions to the fabric selvage. We will also take panels, jelly rolls (2.5" x WOF), layer cakes (10" x 10"), charm packs (5" x 5") and fat quarters (18" x 22") if you want to cut them. If not, we will cut and package.

Bring your **fabric** to the Guild meeting in **December**. (Tub will be provided.) I have no room to store your books and patterns for 4 months. I will let you know when you can bring them to Guild. You can also make arrangements with me to drop off your fabric directly to my house.

Sturgeon Nancy
450 Bedford Ct.
Naperville 60540
630/341-8549

Website

Kathleen Pallardy

rqqwebsite@gmail.com

If you need something added or changed on the website www.riverwalkquilters.com, please email Kathleen Pallardy at the rqqwebsite@gmail.com

Please contact Kathleen Pallardy to post your quilting services for hire on the RQG website. Please include a brief description of your services and preferred contact information to be posted to the website.

Advertising rates are based on one month's issue. Ads must be prepaid and received by the Editor by 4th Tuesday of each month.

Full Page \$50.00 * Half Page \$25.00

Quarter Page \$12.50 Eighth Page \$ 5.00

*Full page ad available for single month only.

The Riverwalk Quilters Guild newsletter is published monthly. To submit articles for inclusion, contact the editor at Send to: RiverwalkQG.newsletter@gmail.com

by 4th Tuesday of the month.

Website: www.riverwalkquilters.com

Facebook: <http://www.facebook.com/Riverwalk>

Riverwalk Quilters Guild meetings

2nd Tuesday, 7:00 pm

RQG Board meetings

4th Tuesday, 7:00 pm Grace Church

Grace United Methodist Church
300 E Gartner Road, Naperville, IL

Riverwalk Quilters Guild

POSITION	MEMBER
President	Mary Cieslak
Vice-President	Margaret Zitt
Treasurer	Linda Benda
Secretary	Jen Beatty
Newsletter	Carol Matlak
Programs/Workshops	Sara Carroll
Contracts	Norma Beckemeier Jill Bryan Kathy Clancy Karen Jordan
Library	Rita Farrell Lynn Slaughter
Hospitality	Leesa Jump Dee McHale
Special Events	Darlene Ebel
Membership	Bev Parker Carol Rubek
Website	Kathleen Pallardy
Philanthropy	Sandy Doubek Deb Obriecht
Rummage Sale	Nancy Sturgeon
<i>Small Quilt Auction-Oct</i>	Margaret M. Donahue

Newsletter information/requests should be sent to:

RiverwalkQG.newsletter@gmail.com

Please do not send to my personal email as it may get lost.