

Riverwalk Quilters Guild

Volume XXI Issue 9 March 2015

President's Message

Vicky Laws

president@riverwalkquilters.com

Happy countdown to Spring!

Just a few short weeks before the official start of spring on March 20th! Hoping winter releases its grip on us and it will start warming up soon. A gal can dream.

It is getting to be crunch time in recruiting members to join the board. The following positions still need a volunteer to step forward. We are a small group and now is the time to volunteer.

Openings:

Vice-President

Secretary

Hospitality - 2 openings

Philanthropy - 1 opening

Publicity

Membership - 2 openings

Newsletter

Contracts

Nominating (2016/2017)

January 2016 Holiday party - 2 or 3 people

Thank you to Terri Hayes and Carol Rubeck for volunteering for the Library committee.

And thank you to the people who are continuing in their positions for a second year.

Treasurer: Bev Parker

Programs/Workshops: Tracy Husch-Lissak,
Joan Der & Leesa Jump

Philanthropy: Sandy Hess

Special Events: Nancy Lindbergh & Ruth Hild

Website/Facebook: Sue Damitz &

Kathleen Herbach

Small Quilt Auction: Rosemary Sanza

Please reach out to me before our next meeting on Tuesday, March 10th.

Thank you!



March Meeting

Sandy Doubek

programs@riverwalkquilters.com

We are sorry to say that we were unable to bring in Thomas Knauer as our speaker for this month's meeting.

So... you are asking, who is coming to speak and do a trunk show?? YOU ARE! We cordially invite each and every one of you to come and be a part of a guild wide trunk show!

How will this work? Each person brings up to 5 of their favorite quilts to show and tell us why they mean so much to you. Maybe a quilt that was handed down to you, an antique, a special gift from a friend or bee. Or maybe you want to show one from a class or new technique or a quilt that you always wanted to make and you finally mastered it! It's up to you. Each person who participates will be able to pick out a fat-quarter as a gift from the guild for making it a special evening!

Can't wait to see all your quilts!!

Member Gallery

Oriene Springstroh

Check out the gallery pages of two more members on our website:

[Sue Damitz](#) and [Sandy Hess](#)

Links to all of the previous interviews are also available in case you missed them.

What To Bring in March

Name Tag

Lots of Show and Tell!

Completed Challenge Quilts

Philanthropy Donations

Completed Rag Quilt Squares

Snacks and Treats

Library Books



Philanthropy

Janelle Black and Sandy Hess
philanthropy@riverwalkquilters.com

In memory of Janelle Evelyn Black



By now most members know that Janelle passed away suddenly on February 10, 2015.

Janelle was a hard working member of our Guild and a true hand piecing and hand quilting warrior. She was a very generous and caring person who enjoyed co-chairing philanthropy.

Many times when we delivered the beautiful quilts, pillowcases, heart and port pillows we shared the need to do more. Our guild has lost a wonderful friend and relentless worker. I could go on for pages about my dear friend, but I will stop here with "Rest in Peace" dear friend.

I would like to thank all of the talented and generous members who, in January and February donated a total of 16 quilts and 11 pillowcases (not all are pictured). I will have my ducks in a row at the March meeting and the sign-in book will be available! Sorry for missing your names.



Our Guild, to date, has delivered 69 quilts shared between Edwards Care Center and Hesel House, and many pillows to the Cancer Care Center. Good job girls!



Our April "rag quilt" sew-in is fast approaching. At the March meeting we will be signing up for bringing sewing machines, etc.

Please bring your squares to this meeting so they can be sorted and ready for the quilts in April. Let's make this a night to be proud of our Guild for what we continue to accomplish in helping others.

A reminder for squares: cut 2 each 8" squares of fabric, 1 each 7" square batting and sew corner to corner making an X. You can see the full instructions with pictures on the Riverwalk website [here](#).



At our Board meeting in February, we received 2 more quilts from Nancy Sturgeon and 136 port pillows from Celeste and Susan Akre. What a mound of pillows! Many are kid friendly patterns. Thank you so much. These will go to the Edwards Cancer Center.

A Different Box of Crayons

Lynn Schmitt
April 18 Workshop

We are still taking sign-ups for the workshop on April 18 with Lynn Schmitt, who spoke at our February meeting. We will have some fabric samples available of the eclectic backgrounds for those taking the class. A sample of the class kit will be at the meeting. The kit is \$27.00 for the appliqué center. A separate finishing kit is available.

Location: Quilters Quest in Woodridge

Date/Time: April 18, 9:30-3:30

Cost: \$45.00

Optional Lunch: \$7.00

How to Use Creative Grids

Rita Fishel
May 12 Guild Meeting

Come and learn from Rita Fishel how you can use the Creative Grid Rulers that you own or hope to own in creating your own quilts. A fellow member saw Rita demonstrate last year and recommended her to us.

Rita Fishel is a nationally known author, speaker, and teacher. She is Goddess and Queen Mother of Creations SewClever in Chillicothe, Ohio, and national Demo-Goddess, designer, and consultant for Creative Grids USA. She is the author of two books from the American Quilter's Society: *Mystery Quilts* and *Everyday Quilts*.

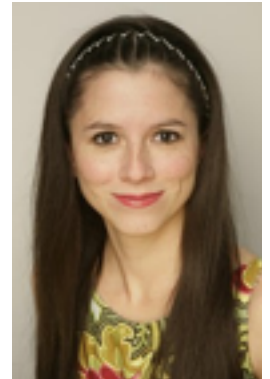
A native of northeastern Ohio with a B.A. in clothing and textiles/business from the University of Akron, Rita purchased a small clothing and fabric business in 1992 and hasn't looked back. Now located in a beautiful 1800s Georgian home, Creations SewClever is a full-line quilt shop with three longarm quilting machines, a friendly staff of 16 quilters, and an amusing resident ghost. When she's not there, Rita is on the road in the Stitch Mobile, sharing her passion for all-things-quilt with guilds and groups nationwide.

For more information, visit Creations SewClever at www.creationssewclever.com.

Where Did You Buy That Bag?

Sara Lawson
June 9 Guild Meeting & June 10 Workshop

Discover which interfacing and purse hardware you need to make detailed and structured bags. Each attendee will go home with an interfacing charm pack of products that Sara Lawson uses to make her bags. Also, see Sara's trunk show of fabulous bags!



Sara Lawson is a bag pattern designer and fabric designer from Chicago, Illinois. She has two fabric lines with Art Gallery Fabrics called 'Jungle Ave.' and 'Fantasia'. She is the author of 'Big-City Bags' and 'Windy City Bags' (the latter due out October 2015), in addition to curated collections with Aurifil threads. Her sewing pattern company is self-published under her brand, Sew Sweetness. You can find more online at www.sewsweetness.com.

Special Events

Quilt Challenge

specialevents@riverwalkquilters.com

Is your challenge wall hanging completed yet? Hopefully it is almost done. Those turning in their completed wall hanging with inspiration picture and entry form will receive \$1.00 back.

We already have their first exhibit planned. We will exhibit our challenge wall hangings at Naper Settlement's Maple Sugaring weekend March 14 & 15. Hours are Sat. 10-4 & Sun. 1-4PM. We will be in the Pre-emption House Tavern which is to your left as you come in. Stop by to see the exhibit and tell your friends.

Thanks to those who have already volunteered, but we could use more. We will sit with the wall hangings, hand out ballots and information on the guild and auction and answer questions. If you have hand sewing/quilting to bring with you that would be great. Shifts are Sat. 10 to 12, 12 to 2 and 2 to 4 with helpers to set up at 9 AM Sat. & take down at 4 Sun. A sign-up sheet will be at the meeting.

Opportunity Quilt Tickets

Sandy Alfaia and Yvette Thorn

We are handling the opportunity quilt tickets for our members. Many packets were handed out at the December meeting but we still have quite a few to pass out. Be sure to see us at the next meeting to pick up your packet.

We will also be taking stubs and money from those who have already sold theirs. If you would like to pick up some more to sell, we will have those as well.

Let's make this a very successful drive to make money for this beautiful quilt! As always the proceeds will be used to help fund our guild for the coming year.

On a separate note, Sabrina Marton has agreed to organize the travel of this quilt. She will be giving more information in the coming months. Thank you very much Sabrina!

Rummage Sale

Nancy Sturgeon

The January rummage sale was a success even though we didn't make as much money as in the past. I think we had so many items to sell last year because of our program the previous fall about how to organize our sewing room. It seems that members took the speaker's suggestions to heart and used last year's sale as an opportunity to get rid of unused/unwanted items. Those who cleaned out their sewing rooms this year and donated items and, of course, those who purchased new treasures were thrilled with the sale.

Thank you to RQG members who helped set up, sell, and pack up the items. They are: Judy Long, Mary Cieslak, Carol Rubeck, Sandy Alfaia, Terri Hayes, Carol Wilhoit, Sandy Doubek, Margaret Donahue, Norma Beckemeier, Lynn Slaughter, Bev Parker, and Lenore Hrejsa. Thank you also to Donna Millican for organizing the volunteer list and sending out reminders to the volunteers. If you have any suggestions or ideas for next year's sale, contact Nancy Sturgeon.

Project Linus

Build a Block - Build a Quilt Challenge
Lukey the Lucky Penguin

Dear Quilting Friends,
We're SO EXCITED to announce that it's TIME!!!! Registration is now open for the Project Linus Build a Block - Build a Quilt Challenge Fundraiser!!! Note: Anyone can participate from beginners to advance quilters. This year's challenge is Lukey the Lucky Penguin created in memory of my little grandson Luke. The first clue will be revealed on Sunday, February 8th and participants need to be registered in order to participate. If you register after February 8th you will still have access to all previous clues.



The cost to participate is a \$15 tax deductible donation to Project Linus - no more than the cost of any pattern. In the process we hope to raise funds for Project Linus while promoting the craft of quilting by encouraging those who may never have made a quilt to "give it a try"! The instructions are VERY detailed for each "Clue" and the finished quilt is absolutely adorable. In addition there is a cute little story that evolves with each clue about Lukey.

Once the challenge is complete - it's not over! There's a contest!!! Participants can either enter the quilt they made or design their own quilt using the clues from the challenge for a chance at winning a \$999 Janome 3160QDS sewing machine WITH automatic thread cutter!!! (Thanks to the generosity of Sue Fox at Times Square Sewing Complex in Jacksonville IL) Yes - you just push a button and it cuts your thread (plus lots of other great features)!!! Two additional prizes of 100 Fat Quarters of fabric or a Lukey the Penguin Party Basket will go to the 2nd and 3rd place winners.

Click here to read more and to register:

www.projectlinus.org/lukey/

PLEASE SHARE WITH YOUR FRIENDS!

You're going to love it!!!

Mary

Quilt Spectrum 2015
To Boldly Go Where No Quilter Has Gone Before
 Friday, March 27, 10am - 6pm & Saturday, March 28, 10am - 4pm

Unique Boutique
 Merchants' Mall
 Quilting Demonstrations
 Lunch available

Special Exhibit:
 Universe of Mystery Quilts

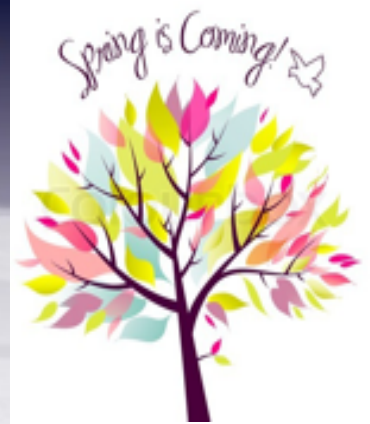
Bed Turning: "Boldly going..."
 A special showing of modern quilts.

Featured Guild Artist: Rhonda Byrd



Admission
 \$6 Adults
 \$5 Seniors (60+)
 \$4 Children (4-12)
 Free Parking

Central Catholic High School
 1201 Airport Road, Bloomington, IL 61704
Presented by Hands All Around Quilt Guild



By-Laws and Procedures

Celeste Akre

vicepresident@riverwalkquilters.com

At the February meeting, three bylaw changes were put before the guild for a vote and all three passed unanimously. The changes were as follows:

Section 5.04 Vice President b) 6) "In alternate years secures the location for the Quilt Show."

This phrase was removed from the Vice President's duties because securing the quilt show location is a responsibility of the quilt show chair people.

Section 5.08 Eligibility

"No member shall hold the same Board position for more than two consecutive one-year terms."

This sentence was edited to read: "No member shall hold the same Executive Board position (President, Vice President, Secretary, and Treasurer) for more than two consecutive one-year terms."

Section IV 4.01

"In general, this "break even point" should be equal to about 80% the number of available workshop spaces."

There was no number in front of the percent sign, so it was changed to 80%.

The full by-laws and procedures are available on the guild website, [here](#).

Upcoming Midwest and Local Events

January 21-April 12

Color in Motion Exhibit

Wisconsin Museum of Quilts and Fiber Arts

March 13-14

Little Cabin in the Woods Quilt Show

Tuckabachee Quilters, Ottawa, IL

March 19-22

Fat (Quarter) and Sassy Shop Hop

Multiple Local Stores

March 26-28

International Quilt Festival Chicago

Rosemont, IL

March 27-28

Quilt Spectrum 2015

Hands All Around Guild, Bloomington, IL

April 10-11

United Church Hyde Park (UCHP) Quilt Show

1448 E. 53rd St., Chicago IL

April 18

Quilt Connection Show and Boutique

Chicago, IL

www.quiltconnection.com

April 23-25

Kalona Quilt Show and Sale

Kalona, IA

May 2-3

The Art of Collaboration Quilt Show

Sinnissippi Quilters, Rockford, IL

INTERNATIONAL



FESTIVAL

DAILY ADMISSION \$10
Seniors & Students \$8
(children 10 and under free)

Full Show Pass \$25

DONALD E. STEPHENS
CONVENTION CENTER

5555 North River Road
Rosemont, Illinois 60018
(just minutes outside of Chicago.)

CALL: 713-781-6864

FAX: 713-781-8182

E-MAIL: shows@quilts.com

WEBSITE: www.quilts.com

JOIN US
FOR OUR
SPRING
FESTIVAL!



CHICAGO

New earlier dates!

March 26 (10 a.m.-7 p.m.)
March 27 & 28 (10 a.m.-6 p.m.)



Classes begin March 26



“THE WORLD’S FAIR OF QUILTS”



You're Invited...
to have a great time at
International Quilt Festival/Chicago!

Get inspired, learn, discover, shop!
Join friends new & old for fun & fabric!

600+ quilts on display; 200+ exhibitor booths;
40+ classes and lectures

Write your email on the line below and
bring it to the Information Booth in the lobby
to receive a FREE show program, the chance to
win a gift bag of goodies, and information about
next year's Chicago Festival.

Challenge 2 by Georgina Buschauer. From the special exhibit "Selections from the Book 500 Traditional Quilts." Top Right: Suburbs by Kathy York. From the exhibit "Quilts: A World of Beauty 2014."

Honorable Discharge

Fine Line Creative Arts Center

Guest artist Bob Adams will be at Fine Line Creative Arts Center June 27-28, 2015, teaching dye and stitch processes called "discharge." Bob is a true artist who works with textiles. His quilts have been in three Quilt National shows, as well as invitational and juried exhibits around the country. See the photo at the bottom of the page. Don't miss this exceptional opportunity!

This class will enable students to explore a variety of discharge techniques using bleach, Thiox and Formosol. You will explore color, line, shape and textures that are possible through discharge using various surface applications; shibori, spraying, stamping, printing, painting and resists. Students will constantly be evaluating their results and be encouraged to explore the layering of different discharge chemicals.

Supplies:

-Fabric. Since everyone works at different speeds it is difficult to specify an amount of fabric to bring to discharge. 4 yards would be the minimum. Black is a good start, but solid colors also discharge well. Blacks discharge to different colors. So you might want to try yards from different manufactures. Black or colored t-shirts can be used also. Make sure that your material is 100% cotton.

-Wear old clothes. If you don't, the clothes you wear could become your old clothes.

-A variety of synthetic brushes.

-Rubber bands or strings for manipulating your cloth.

-Textured rollers (look in the paint department at big box hardware store)

-Stamps if you have them

-Rubber gloves - elbow length

-Chemical/vapors respirator, NOT a dust mask. (Must have!)

June: 27, 28; 9am - 4pm

Kavanagh Building Surface Design Studio

REGISTER NOW!

www.fineline.org or 630-584-9443

Heifer International Quilt Auction

Saturday, October 24, 2015

9 a.m. - 3 p.m. Auction begins at 11 a.m.

Glenview Community Church

1000 Elm Street, Glenview, IL

Quilters grab your needles and thread to help fight hunger. Become part of the circle of hope by donating a quilt to our sixth Heifer International Quilt Auction. People from all over the country are being asked to donate quilts – new quilts, old quilts, antique and Amish quilts, art quilts, large and small, machine and hand quilted. If you would like to help, please donate quilts or crafts, or sponsor a quilt to see your monetary gift increase in value. Quilts donated to the auction must be received by September 15, 2015.

For more information contact:

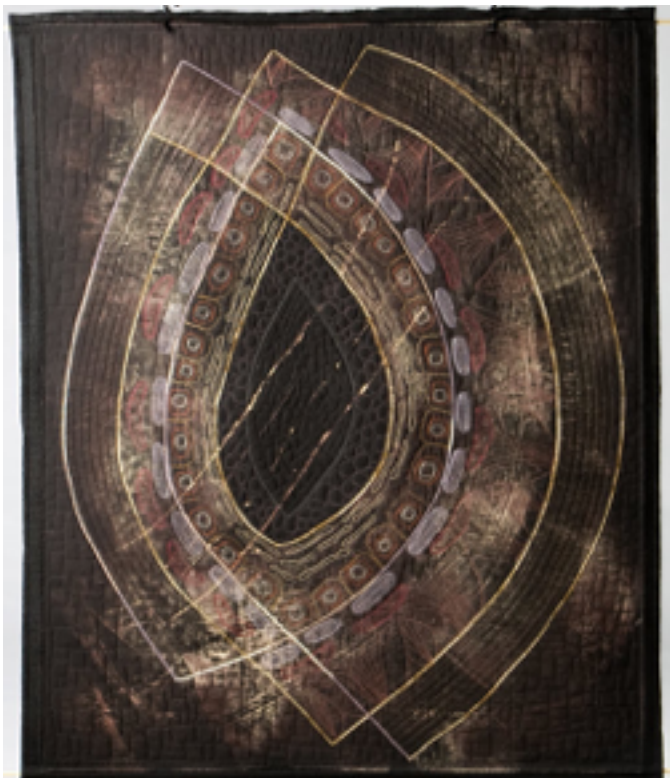
Audrey Veath: (815) 347-2516

Beryl Bills: berylbills@comcast.net

Beth Gunzel, Heifer Community Engagement
Coordinator: (312) 340-8866 or

Beth.Gunzel@heifer.org

Mark your calendars now to help us turn quilts into cows!



Riverwalk Quilters Guild

2014–2015 Board & Committees

President

Vicky Laws

Vice President

Celeste Akre

Secretary

Carol Gruchala

Treasurer

Bev Parker

Programs/Workshops

Sandy Doubek

Contracts

Joan Der

Leesa Jump

Tracy Husch-Lissak

Membership

Lyn Kmiecik

Public Relations

Sandy Alfaia

Nancy Sturgeon

Philanthropy

Sandy Hess

Library

Lenore Hrejsa

Jill Seaworth

Hospitality

Donna Millican

Lois Skooglund

Special Events

Nancy Lindberg

Ruth Hild

Newsletter

Susan Akre

Website/Facebook

Sue Damitz

Kathleen Herbach

Small Quilt Auction

Rosemary Sanza

To send an email to any of these positions or committees, please click the blue titles.

Riverwalk Quilters Guild Meetings

2nd Tuesday of each month at 7pm

Grace United Methodist Church

300 E. Gartner Road, Naperville, Illinois

RQG Board Meetings

4th Tuesday of each month at 7pm

Grace Church Fireside Room

Website: www.riverwalkquilters.com

Facebook: <http://www.facebook.com/RiverwalkQuilters>

[RiverwalkQuilters](http://www.facebook.com/RiverwalkQuilters)

Newsletter: The Riverwalk Quilters Guild newsletter is published monthly. To submit articles for inclusion, contact Susan Akre at newsletter@riverwalkquilters.com by the 4th Tuesday of the month.

Advertising: Rates are based on one month's issue. Ads must be prepaid and received by the Editor by the 4th Tuesday of each month.

Full Page \$50.00

Half Page \$25.00

Quarter Page \$12.50

Eighth Page \$5.00

Full page ad available for single month only.

Upcoming Programs

Sandy Doubek

programs@riverwalkquilters.com

March 10, 2015

Guild Trunk Show

April 14, 2015

Philanthropy Sew-In

April 18, 2015

Workshop: Lynn Schmitt,
Eclectics with wool

May 12, 2015

Rita Fishel, Creative Grids

June 9, 2015

Sara Lawson, sewsweetness.com

Trunk Show: Interfacing Lecture Info

June 10, 2015

Workshop: Sara Lawson Bag Class from
her book: Big City Bags

July 14, 2015

TBA

August 11, 2015

School House

September 8, 2015

TBA

October 20, 2015

Small Quilt Auction and
Opportunity Quilt Raffle

November 10, 2015

Frieda Anderson, **Workshop:** TBA

December 8, 2015

TBA

January 12, 2016

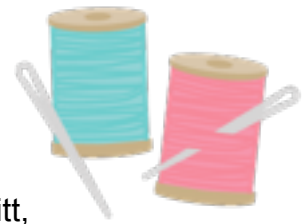
Holiday Party and Rummage Sale

February 9, 2016

Weeks Ringle, **Workshop:** TBA

March 8, 2016

Pat Sloan, **Workshop:** TBA

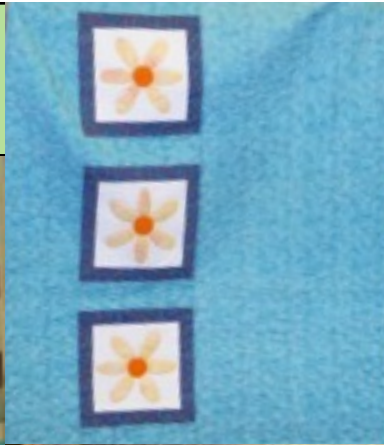


Next RQG Board Meeting:

March 24 at 7:00 pm

Grace Church, Fireside Room

Show and Tell
February Guild Meeting



Show and Tell (Continued)
February Guild Meeting



“Spring if We’re Lucky”

Free Pattern [HERE](#)

(Scroll to the bottom to download pattern)

“Fair Isle”

Free pattern [HERE](#)

